

# SPECIAL PROMO

## **DRILLMEX**

PARTENAIRE DE SOLUTIONS  
THE SOLUTION PARTNER

### **CONTACT US**

Telephone : 450-922-1929  
Toll free : 1-800-363-9403

**MITEE-BITE<sup>®</sup>**  
**PRODUCTS LLC**  
WORKHOLDING SPECIALISTS

**NEW**



Promotion Orders must be  
emailed to  
**[commandes@drillmex.com](mailto:commandes@drillmex.com)**

\*Valid while stocks last

SOW-00196373 (26050) STD Price: \$154.38 - **Promo Price: \$122.58**  
(Pack of 6) 20% OFF

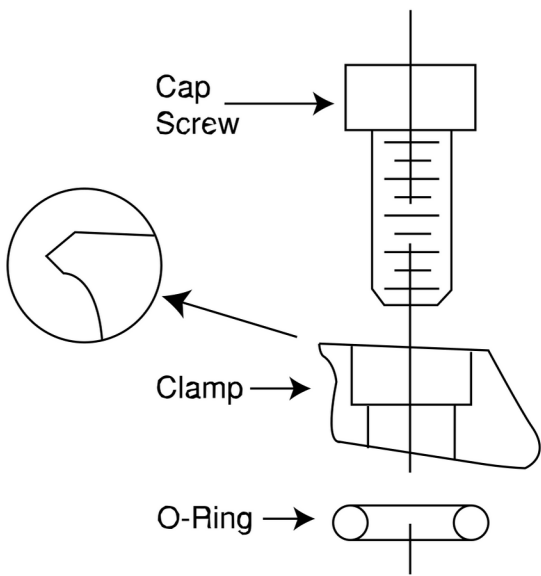
SOW-01431712 (32075) STD Price: \$55.32 - **Promo Price: \$44.08**  
(Pack of 2) 20% OFF



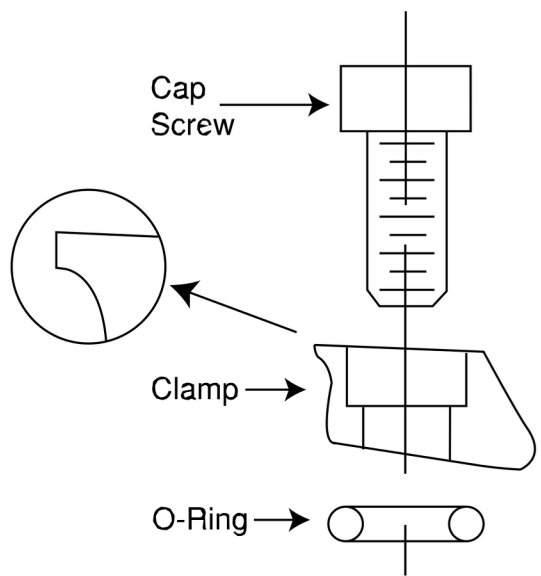
Pitbull®  
Installation



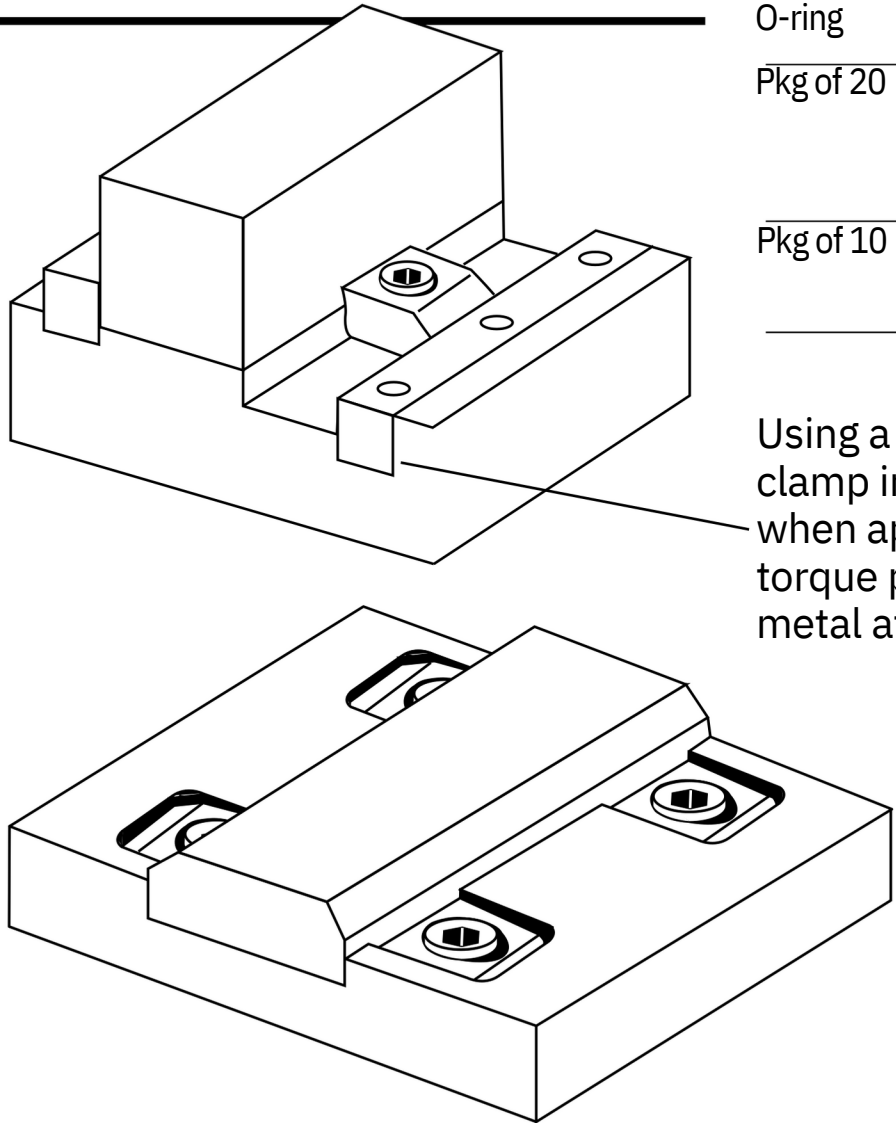
KNIFE EDGE



BLUNT EDGE



FIXTURE EXAMPLES



	Replacement	Screw
O-ring		Size
Pkg of 20	26008	4-40 or M2.5
	26028	8-32 or M4
	26058	1/4-20 or M6
Pkg of 10	26078	3/8-16 or M10
	26083	1/2-13 or M12

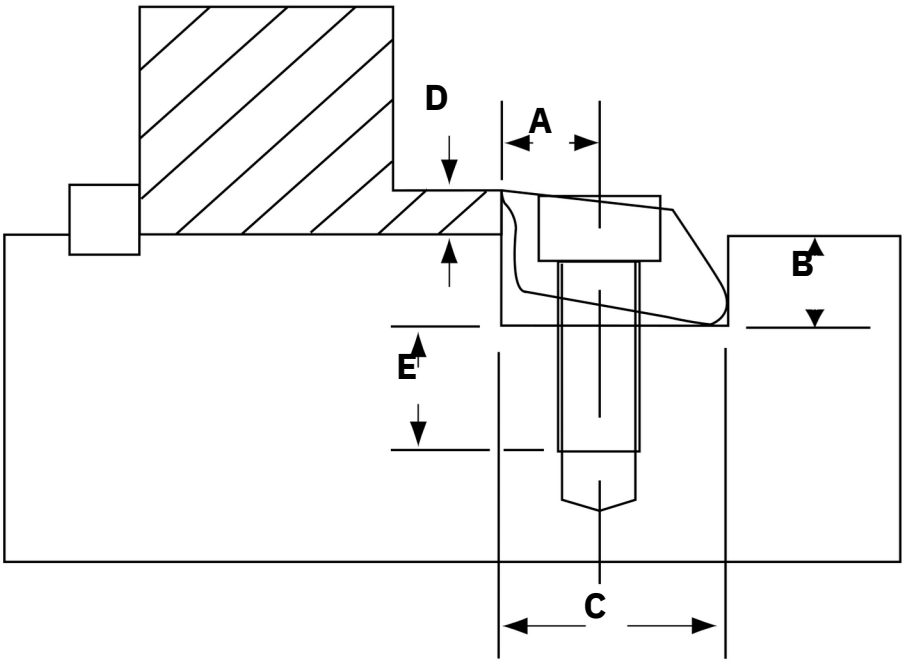
Using a steel rail behind clamp in aluminum fixtures when applying maximum torque prevents displacing metal at pivot point.

Both versions of the tool steel clamps generate the same clamping pressure. However, the Knife Edge clamps bite into the material for more aggressive machining, while the Blunt Edge is less likely to mark the workpiece.

The Knife Edge clamp has a black oxide finish. Both the Knife Edge and Blunt Edge clamps are heat treated 43-45Rc.

Creating Fixtures is Easy... Simply:

- 1. Machine a slot for the Pitbull Clamp
- 2. Drill and tap a hole for the cap screw
- 3. Assemble the clamp as shown in diagram below
- 4. Position clamp as shown in diagram and loosely screw to fixture
- 5. Insert workpiece and tighten cap screw



INCH	Part Number	Description	A	B	Clamp Width C	D*	E	SHCS Screw Size	Max. Torque (Ft/Lbs)	Holding Force (Lbs)	Total Throw	No. Clamps Per Package
	26050	Tool Steel, Knife Edge	.300	.280	.750	.150	.570	1/4-20	14.50	3,600	.0240	6



TalonGrip™ Vise Jaws



Multiple parts



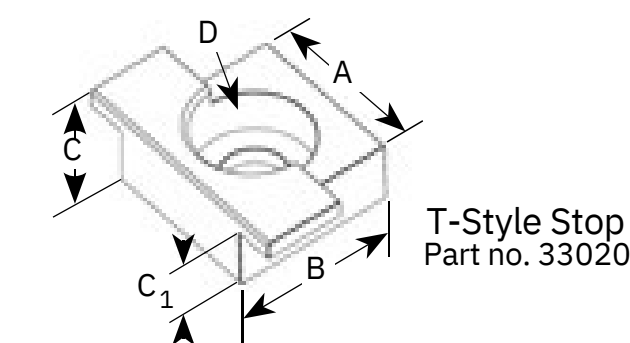
Large part



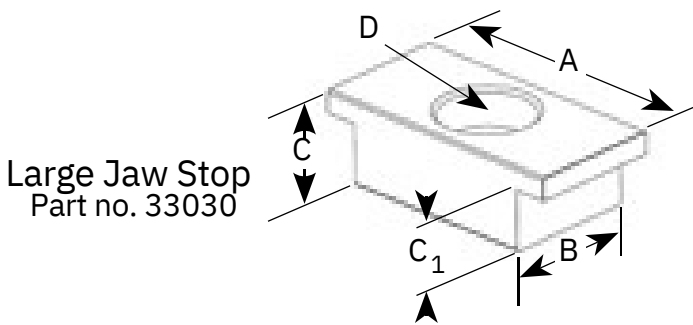
Fixture application with  
Pitbull® Clamps



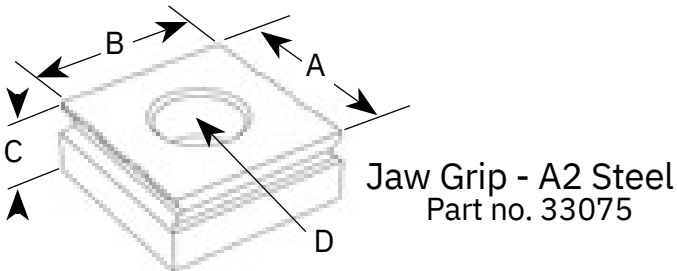
Soft jaws



T-Style Stop  
Part no. 33020

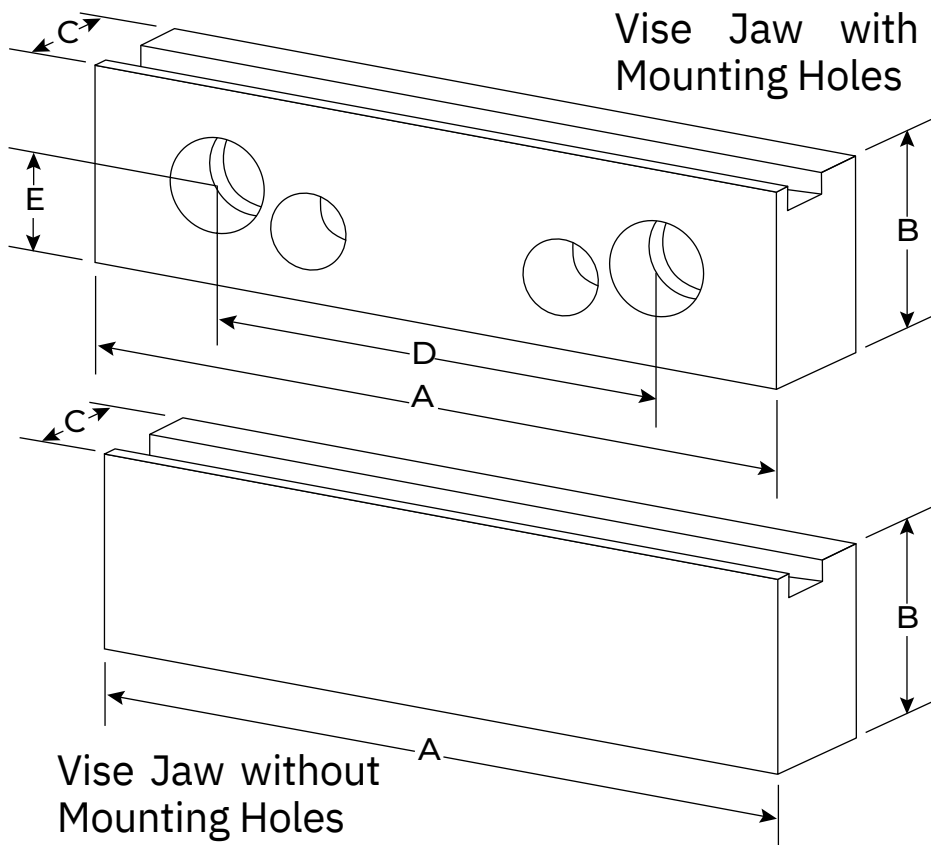


Large Jaw Stop  
Part no. 33030



Jaw Grip - A2 Steel  
Part no. 33075

GRIPS & STOPS



Part No.	Description	A	B	C	C1	D	Recommended Gripping Height	No. Per Pack
32075	Fixture Grips	.75	.750	.312	-	10-32	.060-.120	2